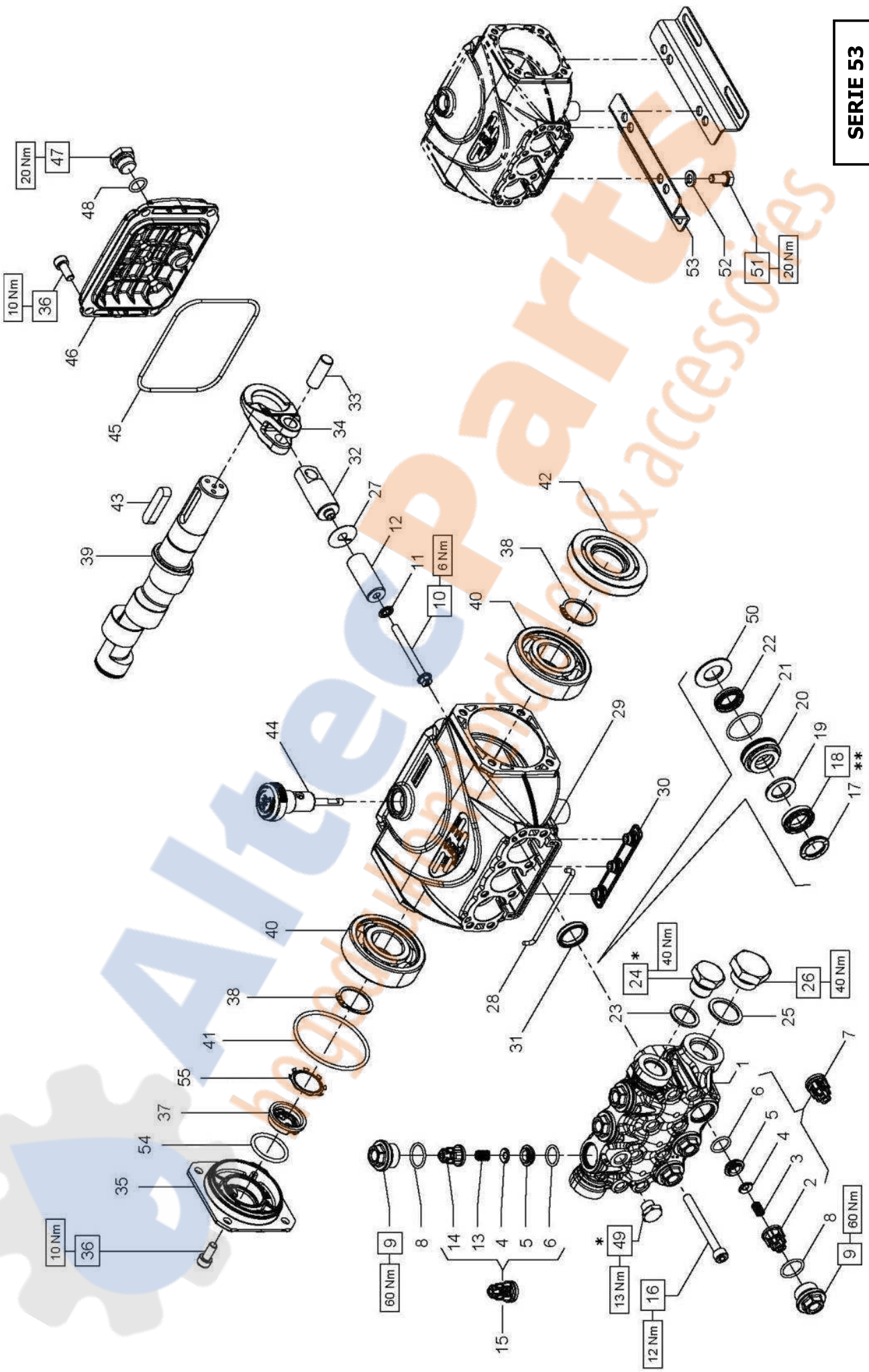


\*\* Lubrificare con grasso di vaselina  
 \*\* To lubricate with vaseline grease  
 \*\* Lubrifier avec gras des vaseline  
 \*\* Sich mit fett zum vaselin schmieren  
 \*\* Para lubricar con la grasa de vaselina  
 \*\* Para lubrificar com a graxa de vaselina

\* Fissare con Loctite 542 col. ROSSO  
 \* Affix with Loctite 542 col. RED  
 \* Fixer avec de la Loctite 542 couleur ROUGE  
 \* Mit Loctite 542 ROT befestigen  
 \* Fijar con Loctite 542 col. ROJO  
 \* Fixar com Loctite 542 cor. VERMELHA



**E1B1807 - E1B1808 - E1B1809 - E1B1611 - E1B1612**  
**E1B1613 - E1B1614 - E1B1810 - E1C1808 - E1C1609**  
**E1C1810 - E1C1811 - E1C1612 - E1C1613 - E1C1614**  
**E1D1807 - E1D1808 - E1D1810 - E1D1811 - E1D1813**  
**E1D1814 - E1E1808 - E1E1810 - E1E1812 - E1E1813**  
**E1E3106 - E1E3107 - E1E3108 - E1E3109 - E1E3110**  
**E1E3111 - E1E3112 - E1E3113 - E1E1814 - E1B1610**

PISTON D. 13		PISTON D. 15		PISTON D. 18	
E1E3106 - E1E3107 E1E3108 - E1E3109 E1E3110 - E1E3111 E1E3112 - E1E3113	E1B1807 - E1B1808 - E1B1809 E1B1810 - E1C1808 - E1C1810 E1C1811 - E1D1807 - E1D1808 E1D1810 - E1D1811 - E1D1813 E1D1814 - E1E1808 - E1E1810 E1E1812 - E1E1813 - E1E1814	E1B1611 - E1B1612 E1B1614 - E1C1609 E1C1612 - E1C1613 E1C1614 - E1B1613 E1B1610			

POS	COD.	DESCRIZIONE - DESCRIPTION - KIT	NR
1	53.1206.15 53.1200.15 53.1201.15	Testata pompa D. 13 Testata pompa D. 15 Testata pompa D. 18	1
2	36.2119.51	Guida valvola d'aspirazione	3
3	94.7326.00	Molla Dm. 6.0x12.0	3
4	36.2112.76	Valvola sferica	6
5	36.2113.66	Sede valvola	6
6	90.3674.00	OR D. 12.00x2.00 NBR SH. 70	6
7	36.7224.01	Gr. valvola d'aspirazione	3
8	90.3593.00	OR D. 15.60x1.78 NBR SH. 70 2062 310-333	6
9	98.2137.50 98.2137.40	Tappo M18x1.5x10 - D.15-18 Tappo M18x1.5x10 - D.13	310 333
10	99.1690.00	Vite M5x55	3
11	96.6905.00	Rosetta D. 5.0x11.5x0.4	3
12	63.0406.09 53.0400.09 63.0405.09	Pistone D. 13x38.5 Pistone D. 15x38.5 Pistone D. 18x38.5	3
13	94.7333.00	Molla Dm. 6.2x10.4	3
14	36.2111.51	Guida valvola di mandata	3
15	36.7193.01	Gr. valvola di mandata	3
16	99.1990.00	Vite M6x60 UNI 5931	8
17	44.1002.51 63.1010.51 63.1011.51	Anello di testa D. 13 Anello di testa D. 15 Anello di testa D. 18	318-319 312-313 314-315

**KIT RICAMBI - SPARE KITS**

KIT Nr.	PISTONE - PISTON D. 13			PISTONE - PISTON D. 15			PISTONE - PISTON D. 18				
	KIT 309	KIT 311	KIT 333	KIT 318	KIT 319	KIT 310	KIT 312	KIT 313	KIT 310	KIT 314	KIT 315
Posizioni include Positions included	2 - 3 - 4 5 - 6 - 13 14 (7) - (15)	31	8 - 9	17 - 18 19 - 21 22	17 - 18 19 - 20 21 - 22 50	8 - 9	17 - 18 19 - 21 22	17 - 18 19 - 20 21 - 22 50	8 - 9	17 - 18 19 - 21 22	17 - 18 19 - 20 21 - 22 50
Nr. Pcs.	3 ÷ 6	3	6	3	1	6	3	1	6	3	1

POS	COD.	DESCRIZIONE - DESCRIPTION - KIT	NR	POS	COD.	DESCRIZIONE - DESCRIPTION - KIT	NR
18	90.2602.00 90.2611.00 90.2653.50	An. ten.alt. D.13x21x4 HP An. ten.alt. D.15x24x5.4/3.4 HP An. ten.alt. D.18x28x6/3.7 HP	318-319 312-313 314-315	39	60.0202.65 60.0204.65 60.0207.65 60.0209.65 60.0285.35 60.0212.35 60.0217.35 60.0283.35 60.0284.35 53.0200.35 53.0201.35	Alb. ecc. C.5 - E1D1807 E1E1808 E1E3106 Alb. ecc. C.6 - E1D1808 E1E1810 E1E3107 Alb. ecc. C.7.2 - E1C1609 E1D1810 E1E1812 E1E3108 Alb. ecc. C.8 - E1E1813 E1E3109 E1D1811 E1E1814 Alb. ecc. C.9 - E1D1813 E1E3110 Alb. ecc. C.9.4 - E1B1807 E1C1808 E1C1612 E1B1610 Alb. ecc. C.11.5 - E1B1808 E1C1810 E1E3113 E1B1613 Alb. ecc. C.10 - E1B1611 E1C1613 E1D1814 E1E3111 Alb. ecc. C.11 - E1B1612 E1C1614 E1E3112 Alb. ecc. C.13 - E1B1614 E1B1810 Alb. ecc. C.12 - E1B1809 E1C1811	3
19	90.5076.50 90.5089.90 90.5111.50	Anello antiest. D. 13x21x3 Anello antiest. D. 15x24x2 Anello antiest. D. 18x28x2	318-319 312-313 314-315				
20	53.2104.70 53.2101.70 53.2102.70	Supporto guarnizione D. 13 Supporto guarnizione D. 15 Supporto guarnizione D. 18	319 313 315				
21	90.3604.00	OR D. 25.12x1.78 NBR SH. 70 2100 312-313-314-315-318-319	3				
22	90.2601.00 90.2608.00 90.2650.00	An. ten. alt. D. 13x20x5 LP An. ten. alt. D. 15x22x5 LP An. ten. alt. D. 18x24x5 LP	318-319 312-313 314-315	40	91.8328.00 91.8331.00	Cuscinetto a sfere - D. 15-18 Cuscinetto a sfere - D. 13	2
23	96.7380.00	Rosetta D. 17.5x23.0x1.5	1	41	90.3898.00	OR D. 56.82x2.62 NBR SH. 70 3225	1
24	98.2100.50	Tappo G 3/8"x13 TE22 - Zinc.	1	42	90.1641.00	Anello rad. D. 25.0x62.0x10.0	1
25	96.7514.00	Rosetta D. 21.5x27.0x1.5	1	43	91.4892.00	Linguetta 8x7x35	1
26	98.2187.00	Tappo G 1/2"x10 TE27 - Zinc.	1	44	98.2108.00	Tappo con asta G 3/8"x45	1
27	96.6990.00	Rosetta D. 7.5x23.0x0.5	3	45	90.3917.00	OR D. 88.57x2.62 NBR SH. 70 3350	1
28	53.2103.82	Guarnizione spugna D. 3x85	1	46	53.1600.22	Coperchio posteriore	1
29	53.0100.22	Carter pompa	1	47	98.2042.50	Tappo G 1/4"x9 TE17 - Zinc.	1
30	58.2104.51	Protezione	1	48	90.3585.00	OR D. 10.82.1.78 NBR SH. 70 2043	1
31	90.1593.00	Anello rad. D. 18.0x24.0x4.0	311	49	98.1968.00	Tappo G 1/8"x8	1
32	53.0500.66	Guida pistone	3	50	53.2105.70 53.2106.70 53.2107.70	Anello per tenuta D. 13 Anello per tenuta D. 15 Anello per tenuta D. 18	319 313 315
33	97.7338.00	Spinotto D. 10x26.5	3	51	99.3037.00	Vite M8x16 UNI 5739	4
34	53.0300.22	Biella	3	52	96.7016.00	Rosetta D. 8.4x14.4x2.0	4
35	53.1500.22	Coperchio laterale carter	1	53	50.2000.74	Piedino pompa	2
36	99.1837.00	Vite M6x14 UNI 5931	8	54	90.3859.00	OR D. 25.07x2.62 NBR SH. 70 3100	1
37	53.2108.51	Vetrino spia livello olio	1	55	90.0671.00	Anello d'arresto ZJ30	1
38	90.0635.00	Anello d'arresto A25	2				